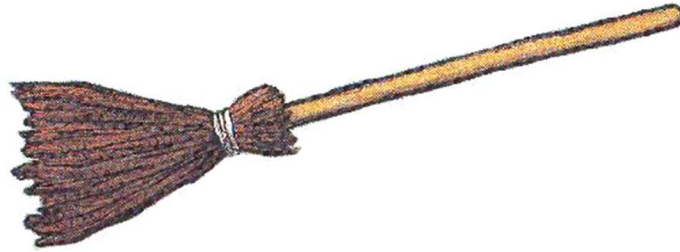
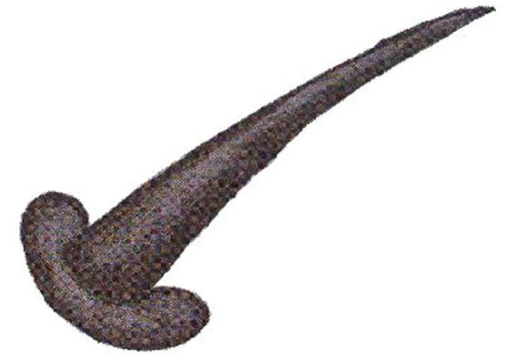




BAGUETTE



BALAI



CHAPEAU

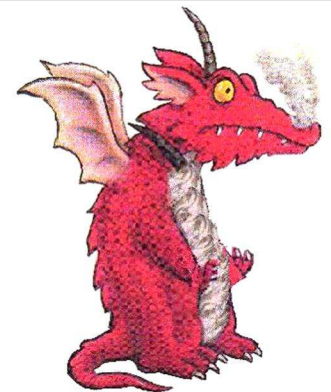
A
L
A
B
I



CHAT



CHIEN



DRAGON



GRENOUILLE

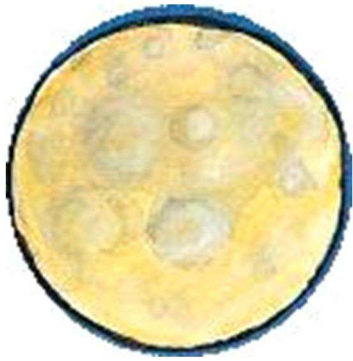


MARMITE

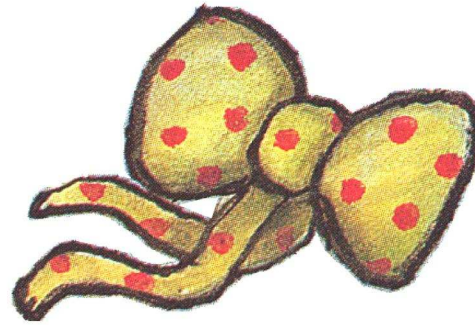


OISEAU

A
L
A
B
I



LUNE



RUBAN



SORCIERE

SORCIERE

MARMITE

RUBAN

CHAPEAU

LUNE

BALAI

BAGUETTE

OISEAU

GRENOUILLE

DRAGON

CHAT

CHIEN